




20 000 883

- diametro foro 32 mm
- rosetta Ø 55 mm



| | | |
|---|--------------------------------------|---------------|
|  | Platinato | 20 000 883-08 |
|  | Champagne spazzolato (Oro 22k) | 20 000 883-46 |
|  | Champagne (Oro 22k) | 20 000 883-47 |

20 000 883

mm [inches]

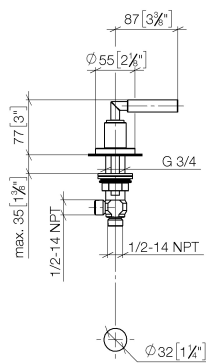
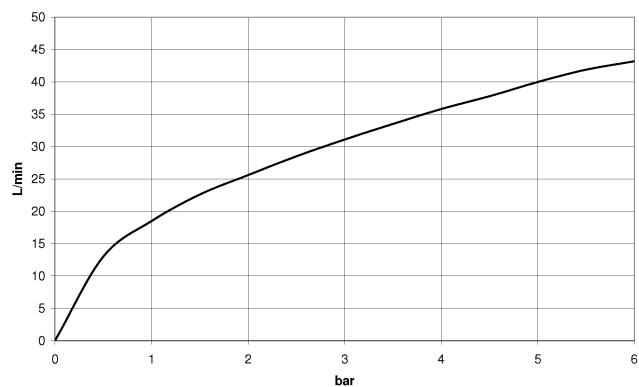


Diagramma di portata

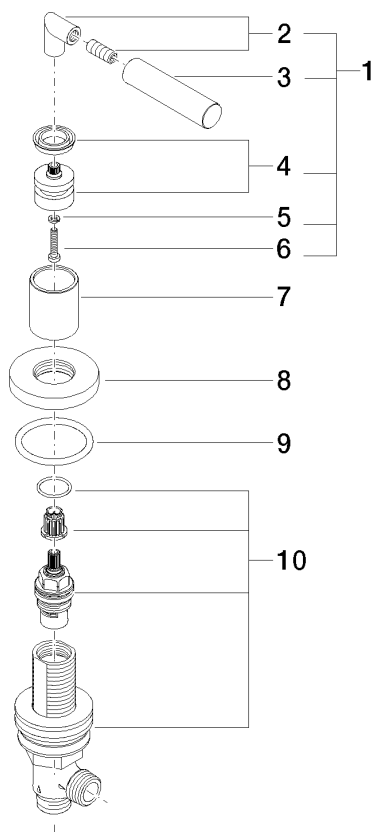


Certificati

IAPMO_4976 (5). WRAS_2112061.

20 000 883

Parts for other finishes can be found here: Champagne spazzolato (Oro 22k)



Elenco delle parti di ricambio

| N. | Codice articolo | Denominazione | Quantità necessaria | Tempo di produzione |
|---|--------------------|----------------|---------------------|---------------------|
| 1 | 04 20 88 052 00-08 | manopola | 1 | 40 |
| 2 | 04 18 20 022 00-08 | angolo | 1 | - |
| Il pezzo di ricambio non può più essere ordinato, si prega di ordinare l'articolo sostitutivo | | | | |
| 3 | 09 20 88 052-08 | manopola | 1 | 40 |
| 4 | 90 12 12 007 00-08 | alloggio | 1 | 40 |
| 5 | 90 30 11 029 00 90 | rondella | 1 | 2 |
| 6 | 90 30 30 075 00 90 | vite | 1 | 2 |
| 7 | 09 21 02 140-08 | bussola | 1 | 40 |
| 8 | 09 27 89 105-08 | rosetta | 1 | 40 |
| 9 | 90 14 10 043 00 90 | guarnizione | 1 | 2 |
| 10 | 90 17 11 040 30 90 | parte laterale | 1 | 2 |